



GMT MONTHLY MEMBERSHIP PROGRESS REPORT

Results as of: 8/31/2019

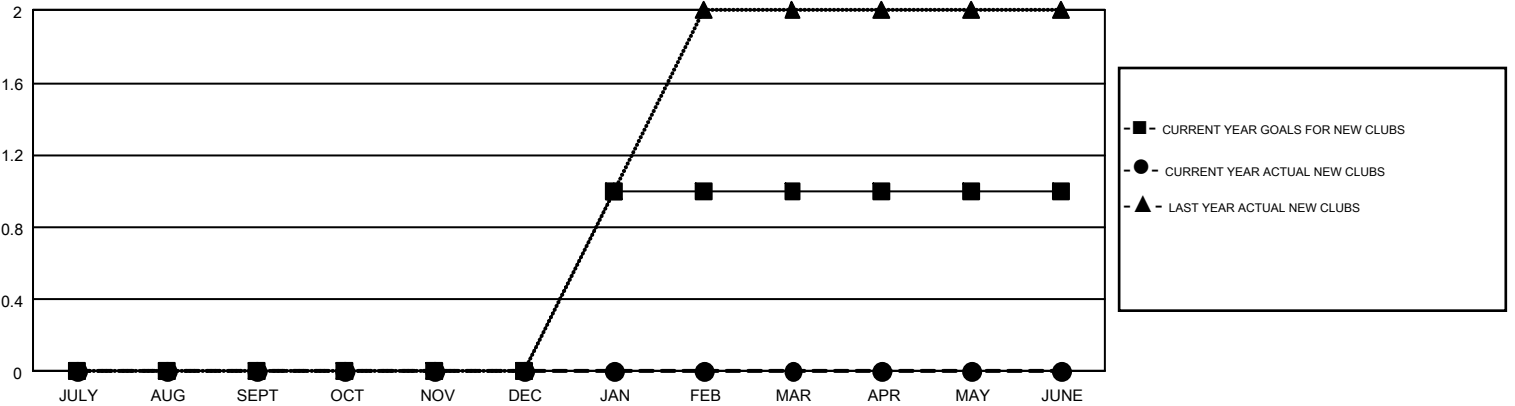
GMT Constitutional Area 3, Group I

GMT: OPEN

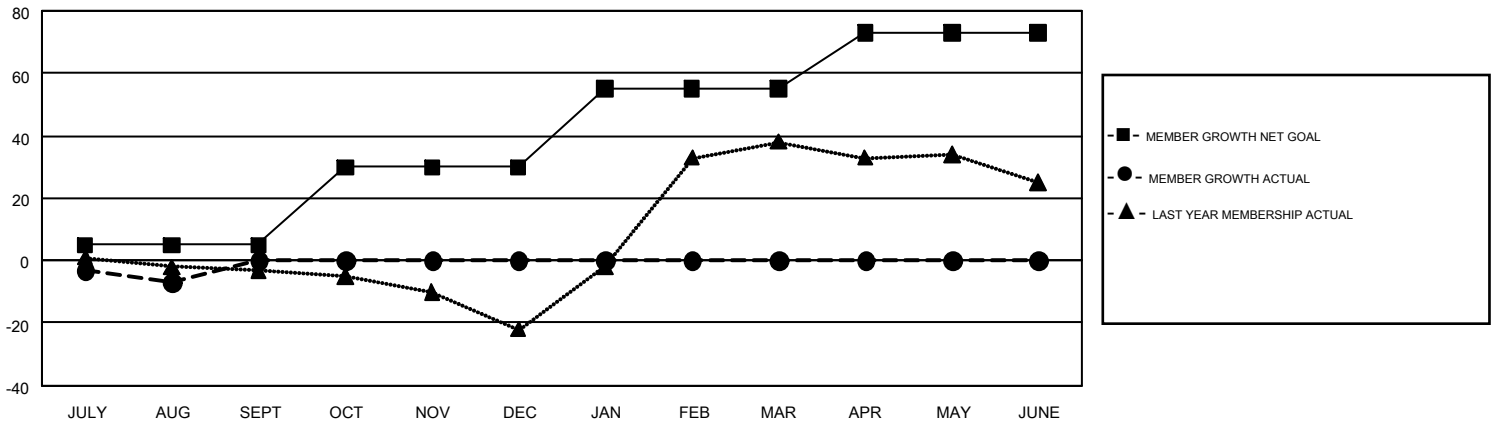
REPORT DOES NOT INCLUDE CLUBS IN UNDISTRICTED AREAS.

Clubs				Members			
RESULTS FOR 2019-2020				RESULTS FOR 2019-2020			
QUARTER	NEW CLUB GOAL	NEW CLUBS	DROPPED CLUBS	QUARTER	MEMBER GROWTH NET GOAL	MEMBER GROWTH ACTUAL	DROPPED MEMBERS ACTUAL (including transfers)
JULY/AUG/SEPT	0	0	0	JULY/AUG/SEPT	5	4	9
OCT/NOV/DEC	0	0	0	OCT/NOV/DEC	25	0	0
JAN/FEB/MAR	1	0	0	JAN/FEB/MAR	25	0	0
APR/MAY/JUNE	0	0	0	APR/MAY/JUNE	18	0	0

GOALS AND ACTUAL NEW CLUBS CUMULATIVE



GOALS AND ACTUAL MEMBERS CUMULATIVE



DROPPED CLUBS: 0	1 CLUBS OF 36 ADDED 1 OR MORE NEW MEMBERS	<u>GENDER DISTRIBUTION</u>	
<u>DROPPED MEMBERS</u>		MALE	313 (48.38%)
DECEASED	3	FEMALE	334 (51.62%)
CLUB CANCELLED	0	TOTAL FAMILY UNIT MEMBERS	
OTHER	6	FAMILY MEMBERS PAYING HALF DUES	
TOTAL	9	TOTAL FAMILY UNIT MEMBERS	
	CLICK HERE FOR CUMULATIVE MEMBERSHIP DATA	FAMILY MEMBERS PAYING HALF DUES	
		TOTAL FAMILY UNIT MEMBERS	
		FAMILY MEMBERS PAYING HALF DUES	